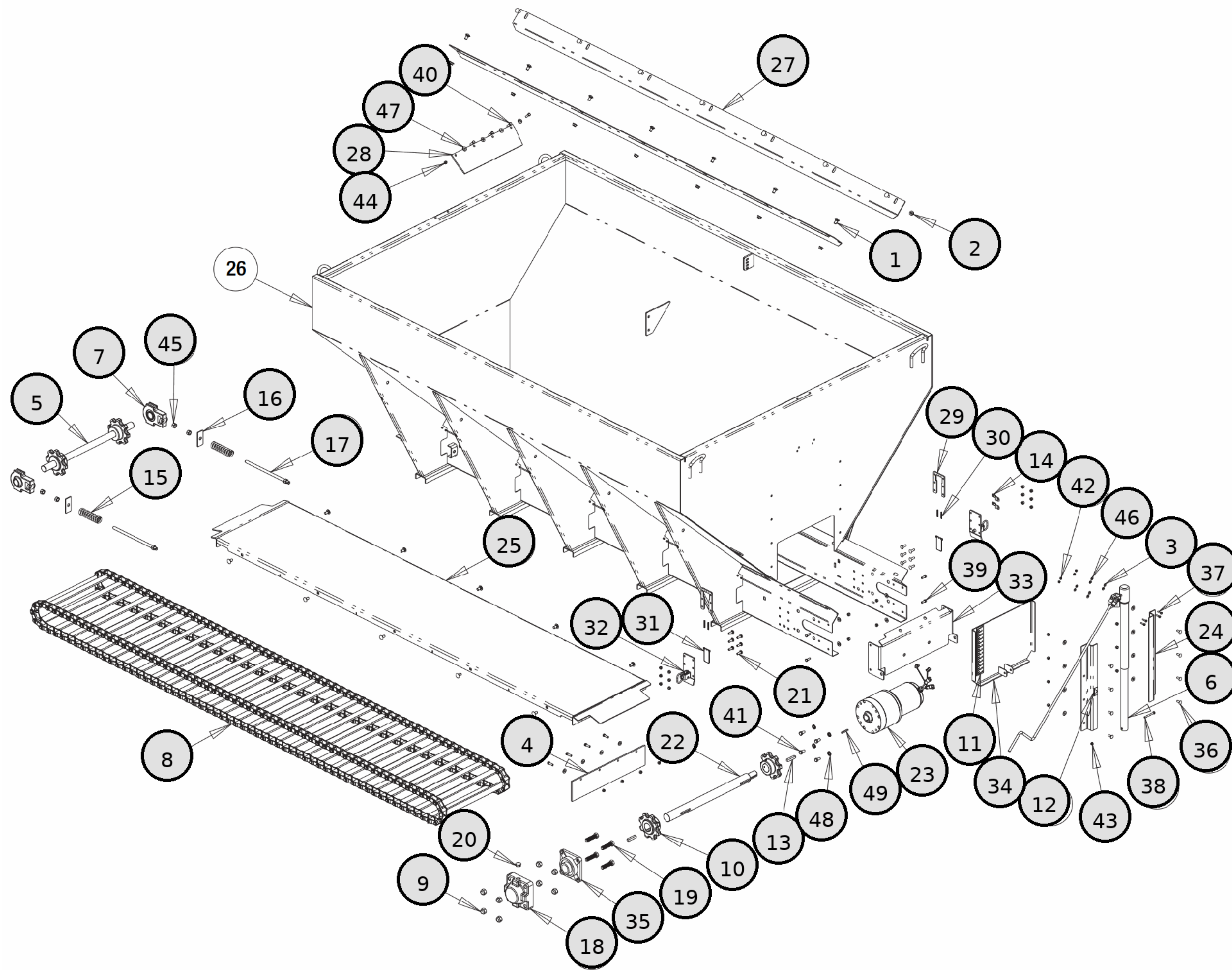




MUNI SST SPREADERS

FIGURE LIST

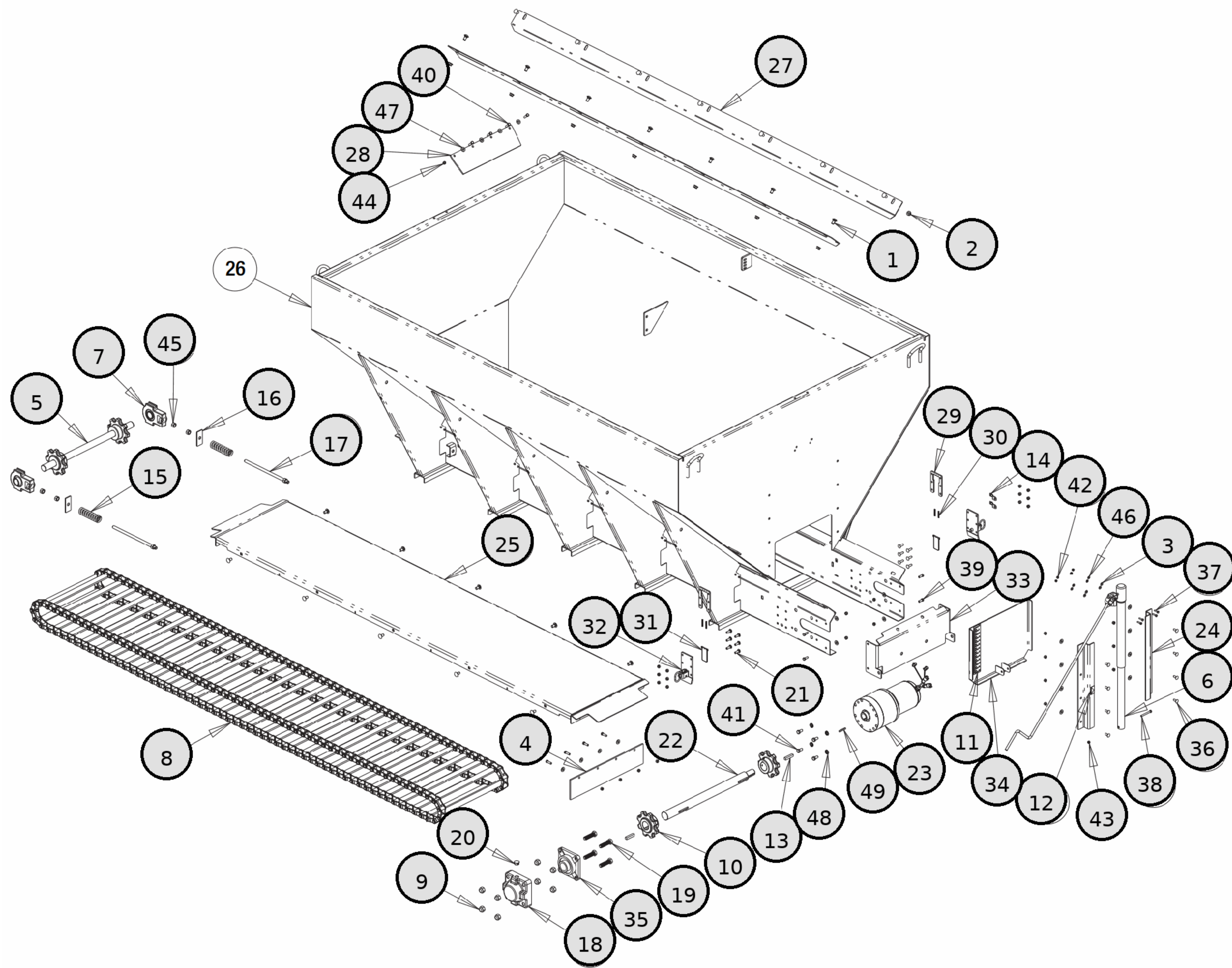
Page	Description
1	14514F570121 14512F630111 14512F570121 14510F630121 14510F570121 HOPPER ASSEMBLY
3	14514F570121 14512F630111 14512F570121 14510F630121 14510F570121 14509F570121 ELECTRIC CHUTE ASSEMBLY
4	14514F570121 14512F630111 14512F570121 14510F630121 14510F570121 14509F570121 HARDWARE CONTROL KIT
5	14514F695111 14514F692111 14514F635111 14514F632111 14514F576111 14514F575111 14514F572111 14512F696111 14512F695111 14512F692111 14512F636111 14512F635111 14512F632111 14512F575111 14512F572111 14512F502111 14510F695111 14510F692111 14510F635121 14510F635111 14510F632111 14510F575111 14510F572111 HOPPER ASSEMBLY
7	14514F696111 14514F636111 14514F576111 14510F696111 14510F636111 14510F576111 HOPPER ASSEMBLY
9	14514F697121 14514F696111 14514F695111 14514F693121 14514F692111 14514F637121 14514F636111 14514F635111 14514F633121 14514F632111 14514F577121 14514F576111 14514F575111 14514F573121 14514F572111 14514F570121 14512F697121 14512F696111 14512F695111 14512F693121 14512F692111 14512F637121 14512F636111 14512F635111 14512F633121 14512F632111 14512F630111 14512F577121 14512F576111 14512F575111 14512F573121 14512F572111 14512F570121 14512F502111 14510F697121 14510F696111 14510F695111 14510F693121 14510F692111 14510F637121 14510F636111 14510F635121 14510F635111 14510F633121 14510F632111 14510F630121 14510F577121 14510F576111 14510F575111 14510F573121 14510F572111 14510F570121 SCREEN KITS
10	14514F697121 14514F696111 14514F695111 14514F693121 14514F692111 14514F637121 14514F636111 14514F635111 14514F633121 14514F632111 14514F577121 14514F576111 14514F575111 14514F573121 14514F572111 14514F570121 14512F697121 14512F696111 14512F695111 14512F693121 14512F692111 14512F637121 14512F636111 14512F635111 14512F633121 14512F632111 14512F630111 14512F577121 14512F576111 14512F575111 14512F573121 14512F572111 14512F570121 14512F502111 14510F697121 14510F696111 14510F695111 14510F693121 14510F692111 14510F637121 14510F636111 14510F635121 14510F635111 14510F633121 14510F632111 14510F630121 14510F577121 14510F576111 14510F575111 14510F573121 14510F572111 14510F570121 INVERTED VEE
11	14514F697121 14514F696111 14514F695111 14514F693121 14514F692111 14514F637121 14514F636111 14514F635111 14514F633121 14514F632111 14514F577121 14514F576111 14514F575111 14514F573121 14514F572111 14512F697121 14512F696111 14512F695111 14512F693121 14512F692111 14512F637121 14512F636111 14512F635111 14512F633121 14512F632111 14512F577121 14512F576111 14512F575111 14512F573121 14512F572111 14512F502111 14510F697121 14510F696111 14510F695111 14510F693121 14510F692111 14510F637121 14510F636111 14510F635121 14510F635111 14510F633121 14510F632111 14510F577121 14510F576111 14510F575111 14510F573121 14510F572111 14509F696111 14509F695111 14509F692111 14509F636111 14509F635111 14509F632111 14509F577121 14509F576111 14509F575111 14509F573121 14509F572111 HYDRAULIC CHUTE ASSEMBLY



REF	PN	DESCRIPTION
1	3001522	BOLT,CARRIAGE,1/2-13 X 1 SST
2	3001523	NUT,HEX, SERRATED FLANGE,1/2-13, SST
3	3002711	WASHER,NYLON 1/4INID X 11/16INOD
4	3010131	WIPER, RUBBER
5	3010358	IDLER SHAFT,ASSEMBLY
6	3010443	JACK ASSEMBLY, FEED GATE
6	3036648	JACK HANDLE AND BEARING REPLACEMENT
7	3010603	BEARING, HD TAKE-UP 1.5 DIA
8	3010653	CHAIN,10FT CONVEYOR
8	3015134	CHAIN, 14 FT 667X CONVEYOR
8	3015545	CHAIN 12 FT, D667X CONVEYOR
9	3010659	NUT,HEX NYLOCK,3/4-10,SST
10	3037921	STBRB SPROCKET,8 -TOOTH,
11	3010917	DECAL,GAUGE FEED GATE
12	3010918	DECAL, POINTER FEED GATE
13	3010989	KEY, SQUARE 1/2IN X 2-1/2IN
14	3017121	CLIP MOUNTING, CONNECTOR
15	3023022	SPRING, CHAIN TENSION
16	3023044	TAKE-UP NUT WELDMENT
17	3023046	BOLT WELDED, TAKE-UP
18	3025824	COVER, BEARING 4F32SCR
19	3026276	SCREW HH, 3/4-10 X 3.0, FULL THREAD SST
20	3026277	PLUG, BEARING COVER
21	3031483	BOLT CARRIAGE SHORT NECK 3/8-16 X 1.25
22	3032660	DRIVE SHAFT
23	3034230	GEAR MOTOR 12 VDC 3/4 HP MUNI
24	3046017	GUIDE, FEED GATE
25	3046028	FLOOR WELDMENT, 10FT
25	3047444	FLOOR WELDMENT, 12 FT
25	3047579	FLOOR WELDMENT, 14 FT
27	3046034	CHAIN SHIELD, 10FT
27	3047581	CHAIN SHIELD, 14FT
27	3047743	GRATE, WELDED HOPPER TOP
28	3046039	WIPER, RUBBER
29	3046371	SPACER, CHUTE ATTACHMENT
30	3046372	SPRING, CHUTE ATTACHMENT
31	3046374	PLUNGER
32	3046375	COVER WELDMENT
33	3052360	GUIDE, CHUTE
34	3046811	FEED GATE, WELDMENT
35	4F32SCR	FLANGE UNIT,4-HOLE,2IN,SET SCREW LOCKING
36	FCB037516100SS	BOLT,CARRIAGE, 3/8-16 X 1, SST
37	FCS025020100SS	SCREW,CAP-1/4IN-20 X 1IN,
38	FCS031018300SS	SCREW, HHC, 5/16-18 X 3.00, SST
39	FCS038016100SS	SCREW CAP-3/8IN-16 X 1IN, HEX HEAD, SST
40	FCS038016125SS	SCREW,CAP-3/8IN-16 X 1-1/4INSST
41	FCS050013100SS	SCREW,CAP-1/2IN-13 X 1IN, HEX
42	FNE025020031SS	NUT, NYLOCK, 1/4-20, GR A, SST
43	FNE031018034SS	NUT, NYLOCK, 5/16-18, GR A, SST

HOPPER ASSEMBLY

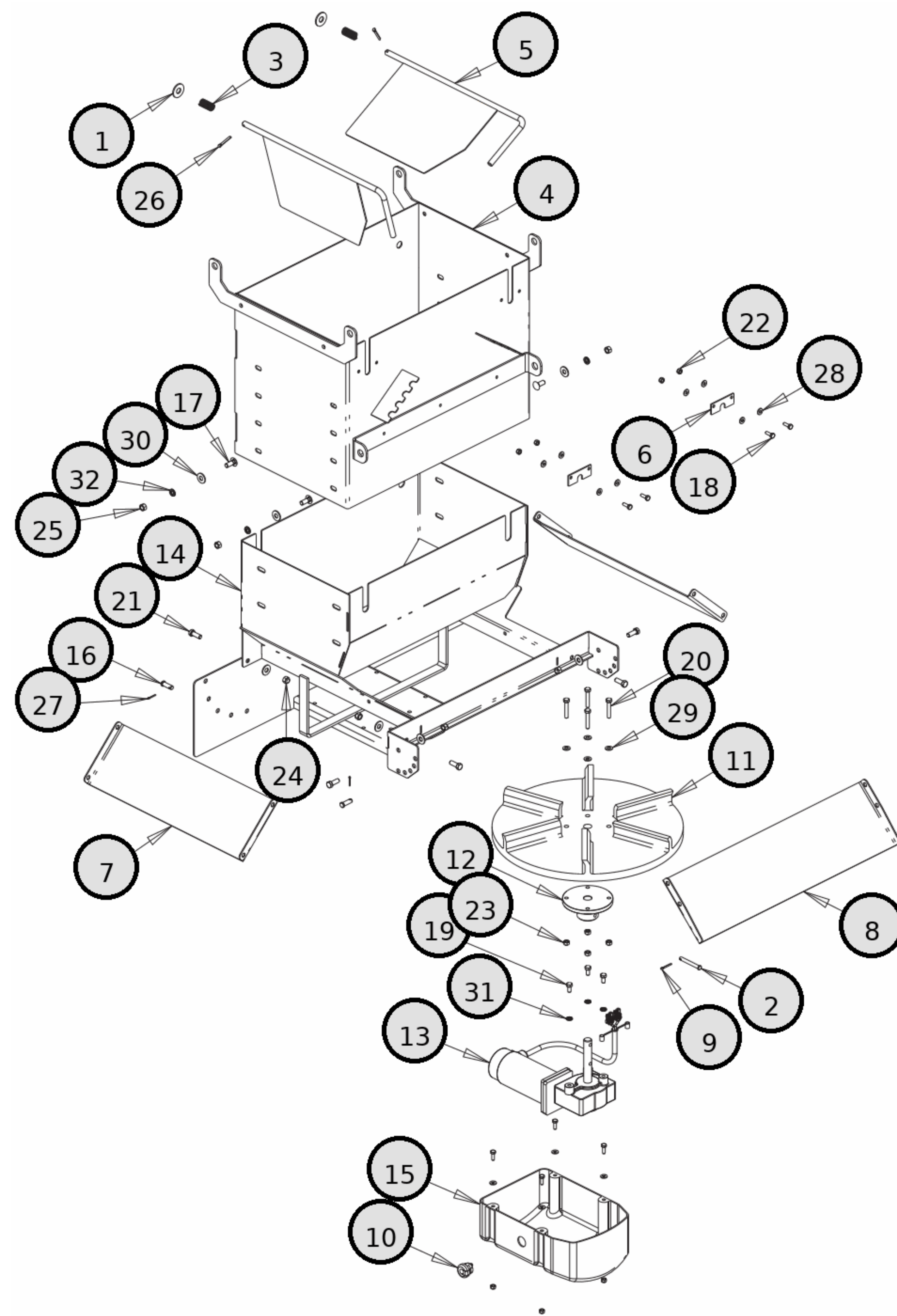
14514F570121 / 14512F630111 / 14512F570121 / 14510F630121 / 14510F570121



REF	PN	DESCRIPTION
44	FNE038016044SS	NUT-NYLOCK, 3/8-16 X 7/16 THK,SST
45	FNH063011054SS	NUT, HEX 5/8-11, SST
46	FWF025063007SS	WASHER,FLAT,1/4IN SAE,SST
47	FWF038100007SS	WASHER-FLAT USS, 3/8IN, SST
48	FWL050088013SS	WASHER,SPLIT LOCK,1/2IN,SST
49	KS402	KEY SQUARE 1/4IN X 2IN

HOPPER ASSEMBLY

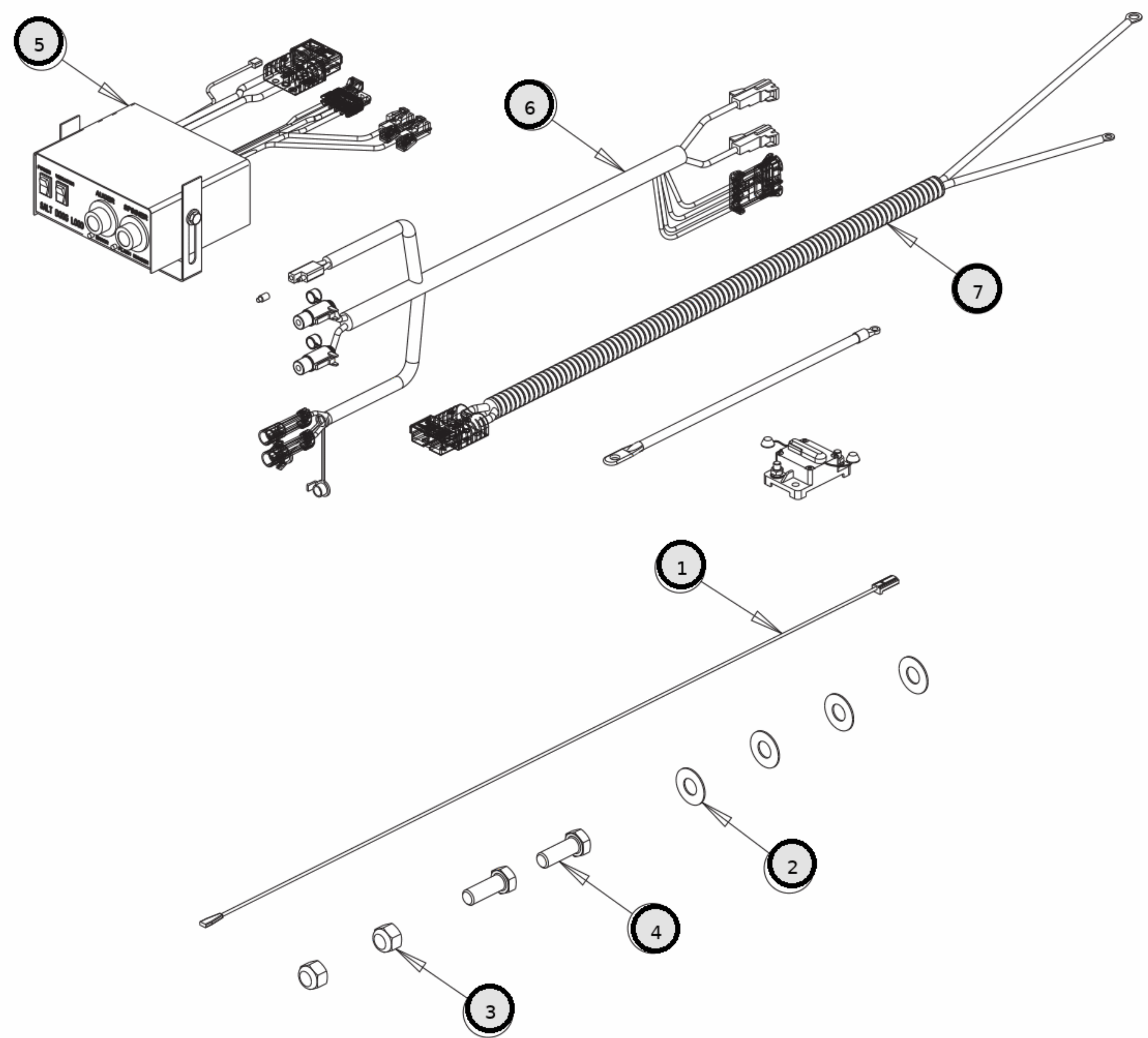
14514F570121 / 14512F630111 / 14512F570121 / 14510F630121 / 14510F570121



REF	PN	DESCRIPTION
1	3000269	WASHER, FLAT, 1/2IN USS, SST
2	3007113	PIN, CLEVIS, SHK DIA .313, OAL 2.51
3	3008853	SPRING, SPINNER CHUTE BAFFLE
4	3010172	CHUTE, UPPER, WELDMENT
5	3010202	DEFLECTOR INNER WELDMENT
6	3010278	RETAINER, DEFLECTORS INNER
7	3012506	BAFFLE SIDE, LOWER CHUTE
8	3012507	BAFFLE REAR, LOWER CHUTE
9	3014994	COTTER PIN 1/8IN X 1IN SST
10	3025065	BUSHING CABLE STRAIN RELIVER
11	3030179	SPINNER 18 IN POLY CW
12	3030182	HUB, SPINNER POLY
13	3030222	GEAR MOTOR, CHUTE
14	3032824	WELDMENT, LOWER CHUTE BOTTOM MOTOR
15	3042530	ENCLOSURE, GEAR MOTOR CHUTE W/ HOLE
16	BCP84620SS	PIN, CLEVIS, SHK DIA .375, OAL 1.148
17	FCB037516100SS	BOLT, CARRIAGE, 3/8-16 X 1, SST
18	FCS025020075SS	SCREW, CAP-1/4-20 X 3/4IN, SST
19	FCS031018063SS	SCREW, CAP-5/16IN-18 X 5/8IN,
20	FCS031018175SS	SCREW, HEX HD CAP SCR, 5/16-18 X
21	FCS038016100SS	SCREW CAP-3/8IN-16 X 1IN, HEX HEAD, SST
22	FNE025020031SS	NUT, NYLOCK, 1/4-20, GR A, SST
23	FNE031018034SS	NUT, NYLOCK, 5/16-18, GR A, SST
24	FNE038016044SS	NUT-NYLOCK, 3/8-16 X 7/16 THK, SST
25	FNH038016028SS	NUT-HEX, 3/8IN-16, SST
26	FPC019000125	COTTER PIN 3/16 X 1-1/4
27	FPC009000075SS	PIN, COTTER 3/32 X 3/4 SST
28	FWF025063007SS	WASHER, FLAT, 1/4IN SAE, SST
29	FWF031075006SS	WASHER, FLAT, 5/16 X .688 X .065, SST
30	FWF038100007SS	WASHER-FLAT USS, 3/8IN, SST
31	FWL031058008SS	WASHER, SPLIT LOCK, 5/16IN, SST
32	FWL038069009SS	WASHER, SPLIT LOCK, 3/8IN, SST

ELECTRIC CHUTE ASSEMBLY

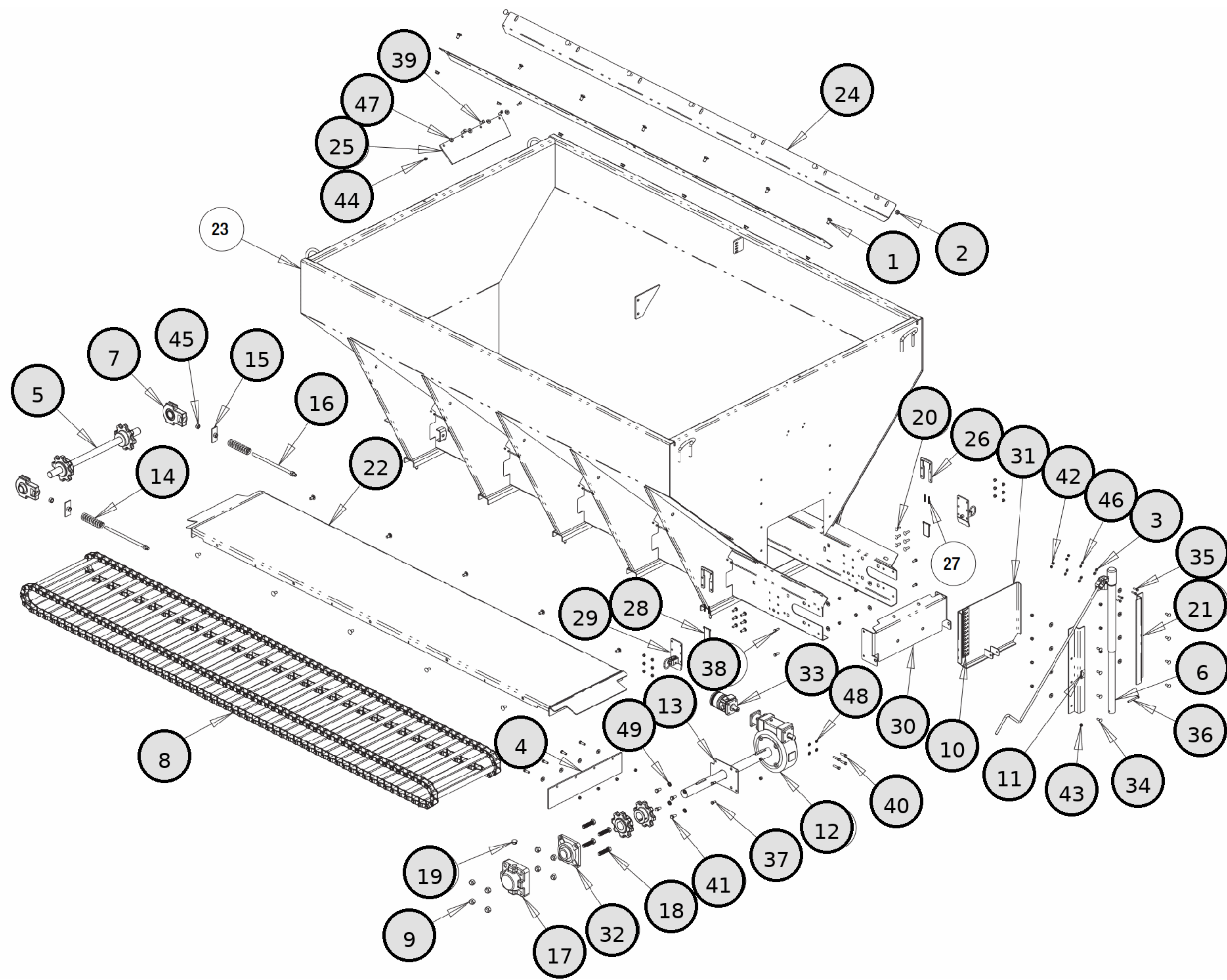
14514F570121 / 14512F630111 / 14512F570121 / 14510F630121 / 14510F570121 / 14509F570121



REF	PN	DESCRIPTION
1	0203700	WIRE ASSY,36IN LONG
2	00700601	WASHER, 5/8 X 1-1/2, .06-.09THK, SST
3	3001247	NUT,HEX,NYLON INSERT, 5/8-11
4	3010540	SCREW,HEX HD,5/8-11X1-1/2,SST
5	3057918	CONTROLLER, PRO
6	3030628	WIRE HARNESS MAIN
7	3035938	KIT POWER CABLE REPLACES 3016943

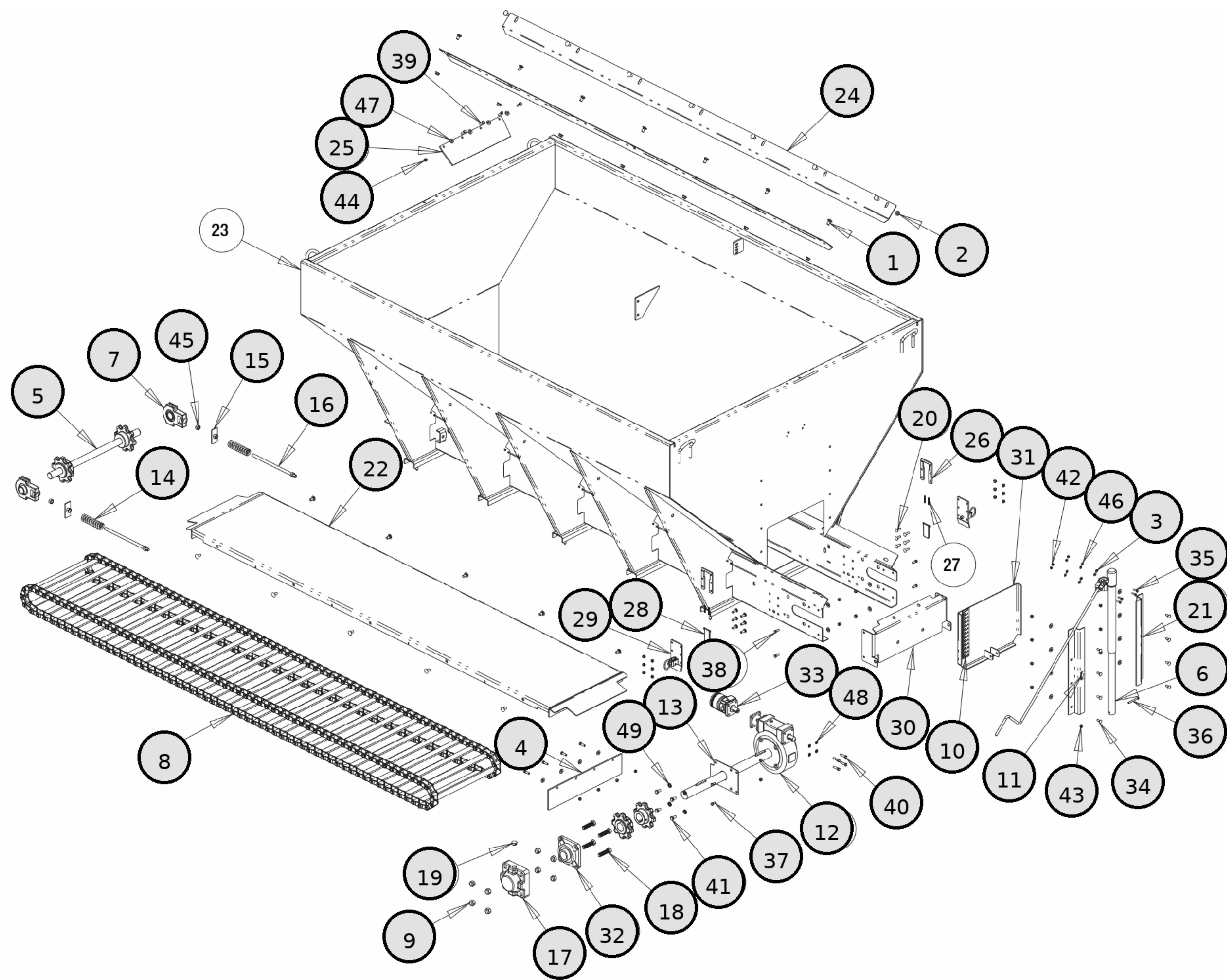
HARDWARE/CONTROL KIT

14514F570121 / 14512F630111 / 14512F570121 / 14510F630121 / 14510F570121 / 14509F570121



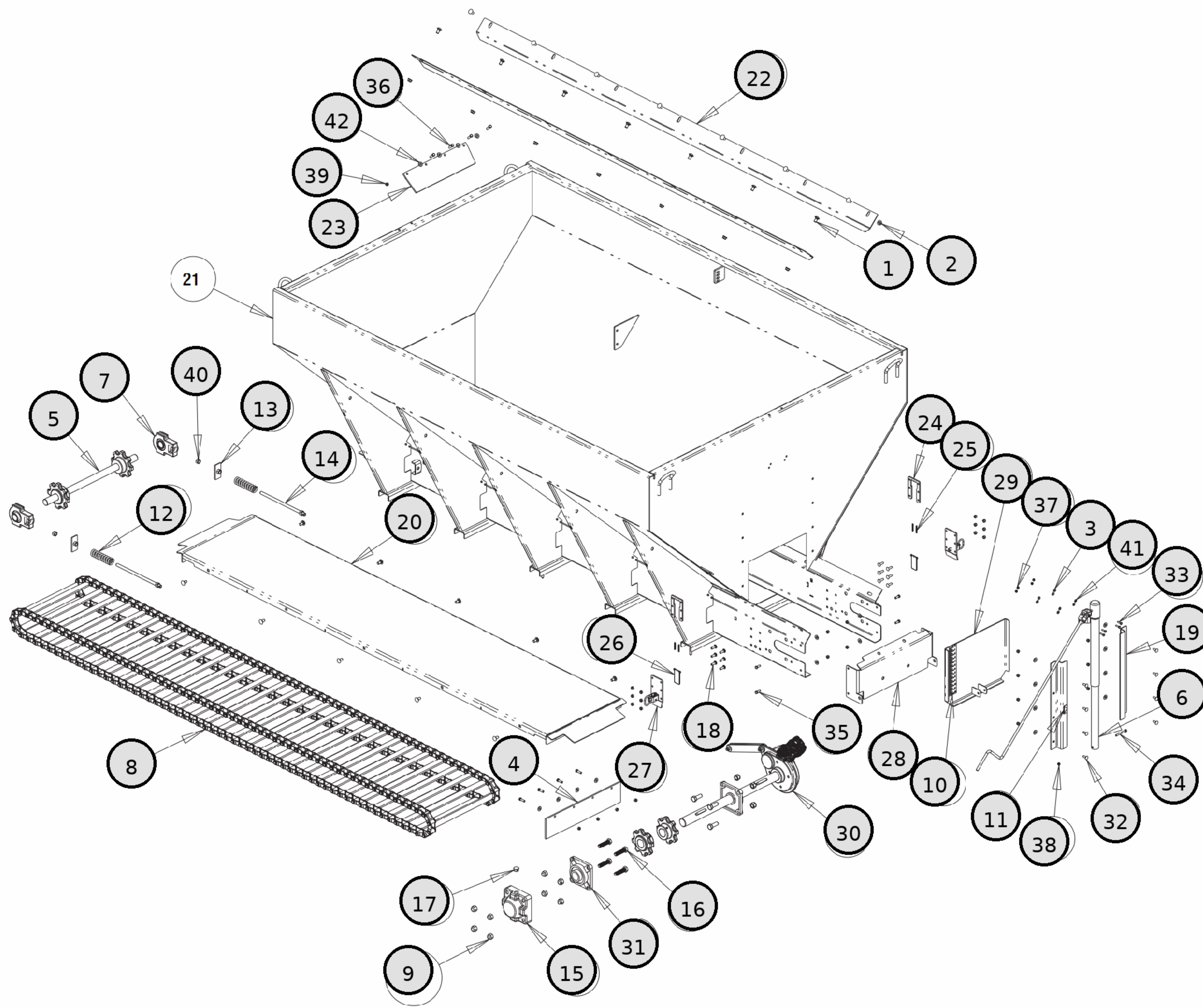
REF	PN	DESCRIPTION
1	3001522	BOLT,CARRIAGE,1/2-13 X 1 SST
2	3001523	NUT,HEX, SERRATED FLANGE,1/2-13, SST
3	3002711	WASHER,NYLON 1/4INID X 11/16INOD
4	3010131	WIPER, RUBBER
5	3010358	IDLER SHAFT,ASSEMBLY
6	3010443	JACK ASSEMBLY, FEED GATE
6	3036648	JACK HANDLE AND BEARING REPLACEMENT
7	3010603	BEARING, HD TAKE-UP 1.5 DIA
8	3010653	CHAIN,10FT CONVEYOR
8	3015134	CHAIN, 14 FT 667X CONVEYOR
8	3015545	CHAIN 12 FT, D667X CONVEYOR
9	3010659	NUT,HEX NYLOCK,3/4-10,SST
10	3010917	DECAL,GAUGE FEED GATE
11	3010918	DECAL, POINTER FEED GATE
12	3010847	GEARBOX 50:1,2INSHAFT W/8T 667X SPRKTS
12	3010991	GEAR BOX 25:1,2INSHAFT W/8T,667X SPRKTS
13	3019694	ADAPTER GEAR BOX
14	3023022	SPRING, CHAIN TENSION
15	3023044	TAKE-UP NUT WELDMENT
16	3023046	BOLT WELDED, TAKE-UP
17	3025824	COVER, BEARING 4F32SCR
18	3026276	SCREW HH, 3/4-10 X 3.0, FULL THREAD SST
19	3026277	PLUG, BEARING COVER
20	3031483	BOLT CARRIAGE SHORT NECK 3/8-16 X 1.25
21	3046017	GUIDE, FEED GATE
22	3046028	FLOOR WELDMENT, 10FT
22	3047444	FLOOR WELDMENT, 12 FT
22	3047579	FLOOR WELDMENT, 14 FT
24	3046034	CHAIN SHIELD, 10FT
24	3047443	CHAIN SHIELD, 12FT
24	3047581	CHAIN SHIELD, 14FT
25	3046039	WIPER, RUBBER
26	3046371	SPACER, CHUTE ATTACHMENT
27	3046372	SPRING, CHUTE ATTACHMENT
28	3046374	PLUNGER
29	3046375	COVER WELDMENT
30	3052360	GUIDE, CHUTE
31	3046811	FEED GATE, WELDMENT
32	4F32SCR	FLANGE UNIT,4-HOLE,2IN,SET SCREW LOCKING
33	CM034P	MOTOR,HYD,7.3 CIPR,4 BOLT
34	FCB037516100SS	BOLT,CARRIAGE, 3/8-16 X 1, SST
35	FCS025020100SS	SCREW,CAP-1/4IN-20 X 1IN,
36	FCS031018300SS	SCREW, HHC, 5/16-18 X 3.00, SST
37	FCS038016075SS	SCREW,HEX HD CAP 3/8-16X3/4SST
38	FCS038016100SS	SCREW CAP-3/8IN-16 X 1IN, HEX HEAD, SST
39	FCS038016125SS	SCREW,CAP-3/8IN-16 X 1-1/4INSST
40	FCS038016150SS	SCREW,CAP-3/8IN-16 X 1-1/2INSST
41	FCS050013100SS	SCREW,CAP-1/2IN-13 X 1IN, HEX
42	FNE025020031SS	NUT, NYLOCK, 1/4-20, GR A, SST

HOPPER ASSEMBLY



REF	PN	DESCRIPTION
43	FNE031018034SS	NUT, NYLOCK, 5/16-18, GR A, SST
44	FNE038016044SS	NUT-NYLOCK, 3/8-16 X 7/16 THK,SST
45	FNH063011054SS	NUT, HEX 5/8-11, SST
46	FWF025063007SS	WASHER,FLAT,1/4IN SAE,SST
47	FWF038100007SS	WASHER-FLAT USS, 3/8IN, SST
48	FWL038069009SS	WASHER,SPLIT LOCK, 3/8IN, SST
49	FWL050088013SS	WASHER,SPLIT LOCK,1/2IN,SST

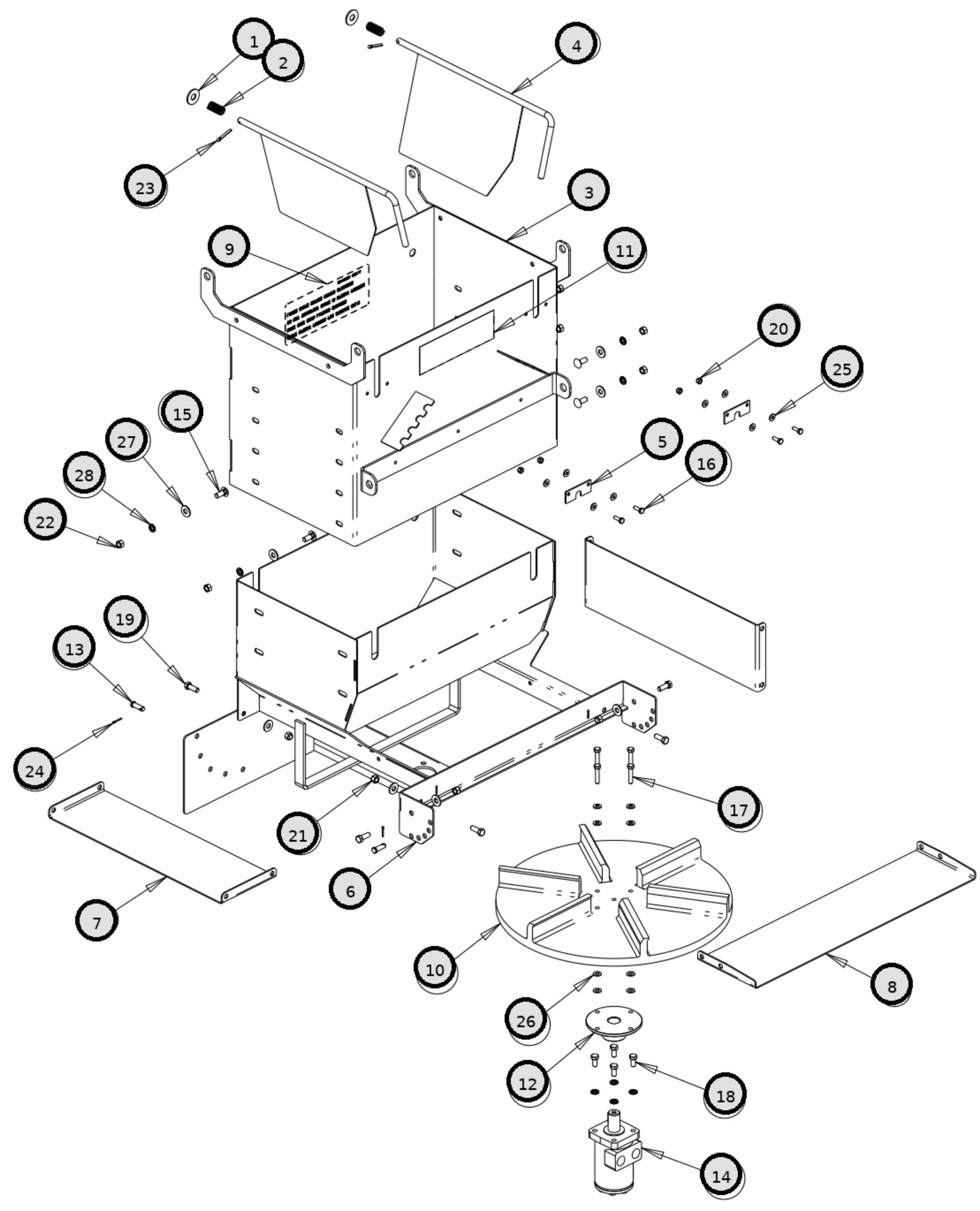
HOPPER ASSEMBLY



REF	PN	DESCRIPTION
1	3001522	BOLT,CARRIAGE,1/2-13 X 1 SST
2	3001523	NUT,HEX, SERRATED FLANGE,1/2-13, SST
3	3002711	WASHER,NYLON 1/4INID X 11/16INOD
4	3010131	WIPER, RUBBER
5	3010358	IDLER SHAFT,ASSEMBLY
6	3010443	JACK ASSEMBLY, FEED GATE
6	3036648	JACK HANDLE AND BEARING REPLACEMENT
7	3010603	BEARING, HD TAKE-UP 1.5 DIA
8	3010653	CHAIN,10FT CONVEYOR
8	3015545	CHAIN 12 FT, D667X CONVEYOR
9	3010659	NUT,HEX NYLOCK,3/4-10,SST
10	3010917	DECAL,GAUGE FEED GATE
11	3010918	DECAL, POINTER FEED GATE
12	3023022	SPRING, CHAIN TENSION
13	3023044	TAKE-UP NUT WELDMENT
14	3023046	BOLT WELDED, TAKE-UP
15	3025824	COVER, BEARING 4F32SCR
16	3026276	SCREW HH, 3/4-10 X 3.0, FULL THREAD SST
17	3026277	PLUG, BEARING COVER
18	3031483	BOLT CARRIAGE SHORT NECK 3/8-16 X 1.25
19	3046017	GUIDE, FEED GATE
20	3046028	FLOOR WELDMENT, 10FT
20	3047444	FLOOR WELDMENT, 12 FT
22	3046034	CHAIN SHIELD, 10FT
22	3047443	CHAIN SHIELD, 12FT
23	3046039	WIPER, RUBBER
24	3046371	SPACER, CHUTE ATTACHMENT
25	3046372	SPRING, CHUTE ATTACHMENT
26	3046374	PLUNGER
27	3046375	COVER WELDMENT
28	3052360	GUIDE, CHUTE
29	3046811	FEED GATE, WELDMENT
30	3019861	GEAR BOX LINKAGE
30	3035567	6:1 GEARBOX ASSEMBLY
30	3035567	GEAR BOX 6:1 SPUR GEARS W/ 2 IN SHAFT
30	3037921	STEEL DRIVE SPROCKET, 8-TOOTH, 2IN
30	CM092P	MOTOR, HYD, 2-BOLT, 24.9IN
30	CM092P	MOTOR,2 BOLT,24.9 CU IN, REPLACES WHITE
31	4F32SCR	FLANGE UNIT,4-HOLE,2IN,SET SCREW LOCKING
32	FCB037516100SS	BOLT,CARRIAGE, 3/8-16 X 1, SST
33	FCS025020100SS	SCREW,CAP-1/4IN-20 X 1IN,
34	FCS031018300SS	SCREW, HHC, 5/16-18 X 3.00, SST
35	FCS038016100SS	SCREW CAP-3/8IN-16 X 1IN, HEX HEAD, SST
36	FCS038016125SS	SCREW,CAP-3/8IN-16 X 1-1/4INSST
37	FNE025020031SS	NUT, NYLOCK, 1/4-20, GR A, SST
38	FNE031018034SS	NUT, NYLOCK, 5/16-18, GR A, SST
39	FNE038016044SS	NUT-NYLOCK, 3/8-16 X 7/16 THK,SST
40	FNH063011054SS	NUT, HEX 5/8-11, SST
41	FWF025063007SS	WASHER,FLAT,1/4IN SAE,SST
42	FWF038100007SS	WASHER-FLAT USS, 3/8IN, SST

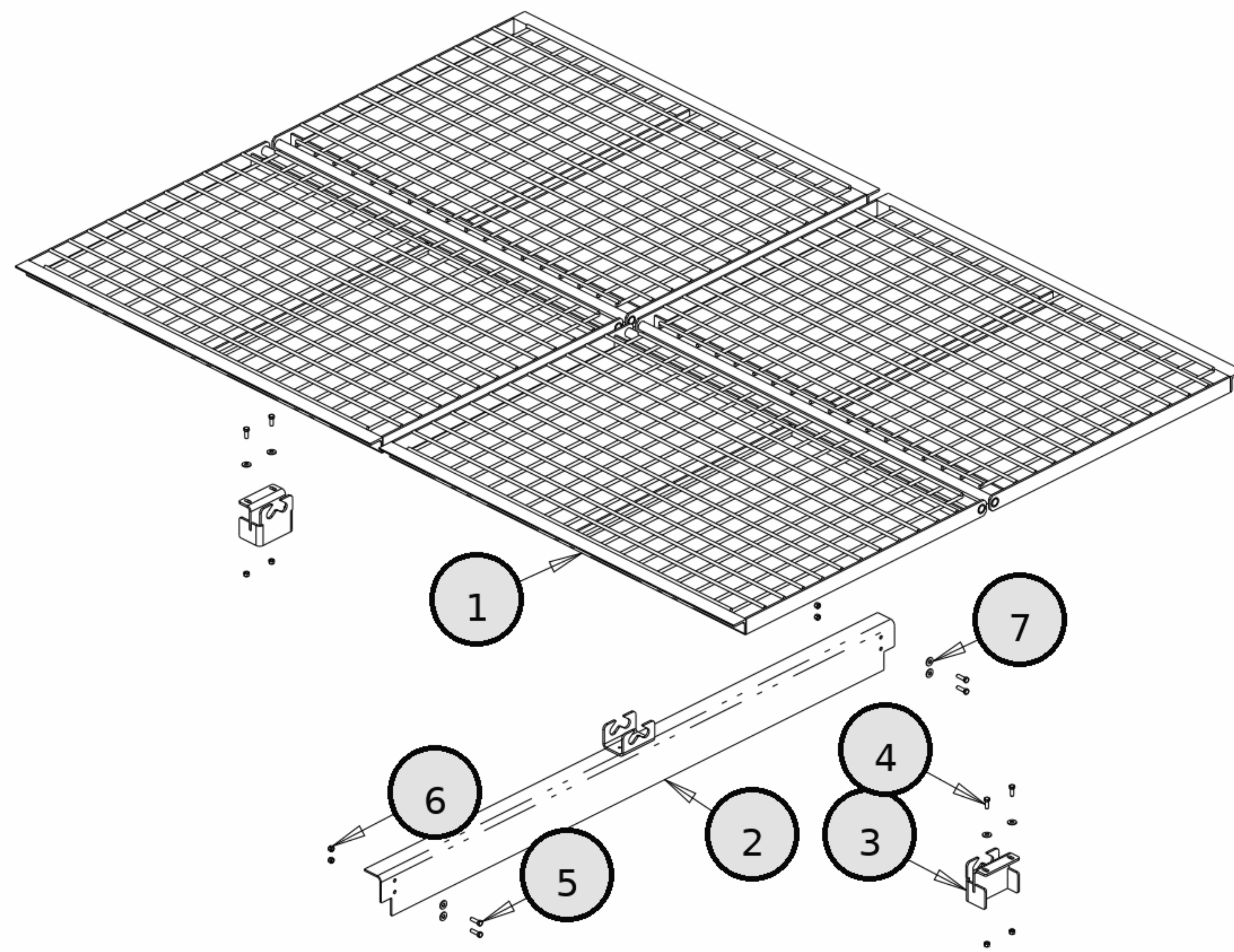
HOPPER ASSEMBLY

14514F696111 / 14514F636111 / 14514F576111 / 14510F696111 / 14510F636111 / 14510F576111



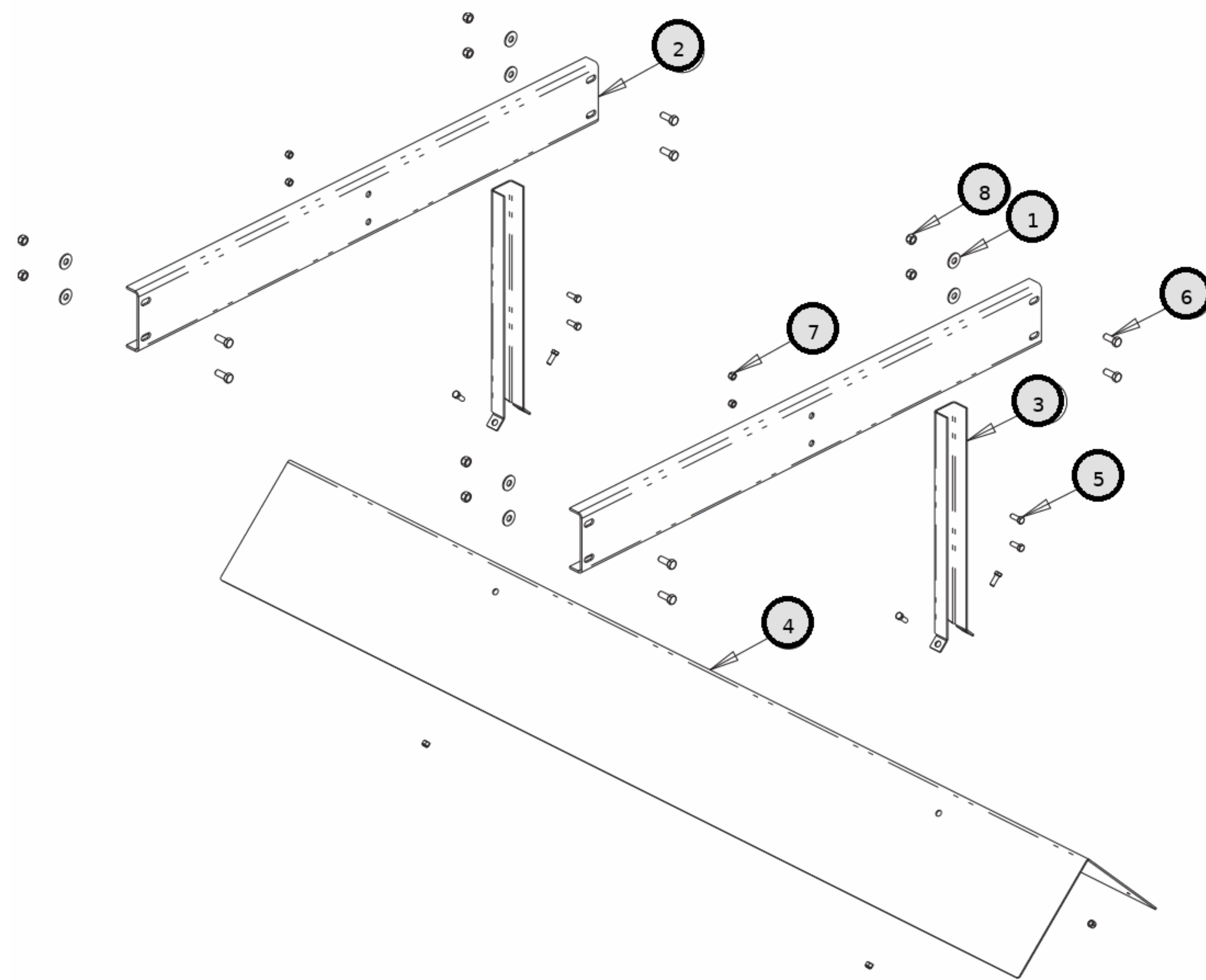
REF	PN	DESCRIPTION
1	3000269	WASHER, FLAT, 1/2IN USS, SST
2	3008853	SPRING, SPINNER CHUTE BAFFLE
3	3010172	CHUTE, UPPER, WELDMENT
4	3010202	DEFLECTOR INNER WELDMENT
5	3010278	RETAINER, DEFLECTORS INNER
6	3012495	CHUTE, LOWER BOTTOM MOTOR WELDMENT
7	3012506	BAFFLE SIDE, LOWER CHUTE
8	3012507	BAFFLE REAR, LOWER CHUTE
9	3046931	LABEL, CHUTE UPRIGHT
10	9240020	SPINNER, UNIVERSAL 20IN DIA, CCW
11	9240131	DECAL #1, DANGER STAY CLEAR
12	924F0017A	HUB, SPINNER, CS UTS W/SET SCREW
13	BCP84620SS	PIN, CLEVIS, SHK DIA .375, OAL 1.148
14	CM004P	MOTOR, HYDRAULIC, 4-BOLT, 3.17 CIPR
15	FCB037516100SS	BOLT, CARRIAGE, 3/8-16 X 1, SST
16	FCS025020075SS	SCREW, CAP-1/4-20 X 3/4IN, SST
17	FCS031018150SS	SCREW, CAP-5/16IN-18 X 1-1/2IN,
18	FCS038016075SS	SCREW, HEX HD CAP 3/8-16X3/4SST
19	FCS038016100SS	SCREW CAP-3/8IN-16 X 1IN, HEX HEAD, SST
20	FNE025020031SS	NUT, NYLOCK, 1/4-20, GR A, SST
21	FNE038016044SS	NUT-NYLOCK, 3/8-16 X 7/16 THK, SST
22	FNH038016028SS	NUT-HEX, 3/8IN-16, SST
23	FPC019000125	COTTER PIN 3/16 X 1-1/4
24	FPC009000075SS	PIN, COTTER 3/32 X 3/4 SST
25	FWF025063007SS	WASHER, FLAT, 1/4IN SAE, SST
26	FWF031075006SS	WASHER, FLAT, 5/16 X .688 X .065, SST
27	FWF038100007SS	WASHER-FLAT USS, 3/8IN, SST
28	FWL038069009SS	WASHER, SPLIT LOCK, 3/8IN, SST

HYDRAULIC CHUTE ASSEMBLY



REF	PN	DESCRIPTION
1	3010116	GRATE,WELDED HOPPER TOP FINISHED BLACK
1	3015129	GRATE WELDED HOPPER TOP 53 IN
1	3015554	GRATE, WELDED HOPPER TOP
2	3041322	SUPPORT, FLAT SCREEN, WELDMENT
3	3047211	DETENT WELDMENT, FLAT SCREEN
4	FCS038016100SS	SCREW CAP-3/8IN-16 X 1IN, HEX HEAD, SST
5	FCS038016125SS	SCREW,CAP-3/8IN-16 X 1-1/4INSST
6	FNE038016044SS	NUT-NYLOCK, 3/8-16 X 7/16 THK,SST
7	FWF038100007SS	WASHER-FLAT USS, 3/8IN, SST

SCREEN KITS



REF	PN	DESCRIPTION
1	3000269	WASHER, FLAT, 1/2IN USS, SST
2	3017730	CROSS MEMBER, INVERTED VEE
3	3017731	HANGER, INVERTED VEE
4	3032805	DEFLECTOR INVERTED VEE
4	3034757	DEFLECTOR, INVERTED VEE, 118IN X 12IN
4	3048826	DEFLECTOR, INVERTED VEE 14FT ELECTRO
5	FCS038016100SS	SCREW CAP-3/8IN-16 X 1IN, HEX HEAD, SST
6	FCS050013125SS	SCREW, HHC, 1/2-13 X 1-1/4IN SST
7	FNE038016044SS	NUT-NYLOCK, 3/8-16 X 7/16 THK, SST
8	FNE050013053SS	NUT, ELASTIC STOP, 1/2-13, SST

INVERTED VEE